

August 2019

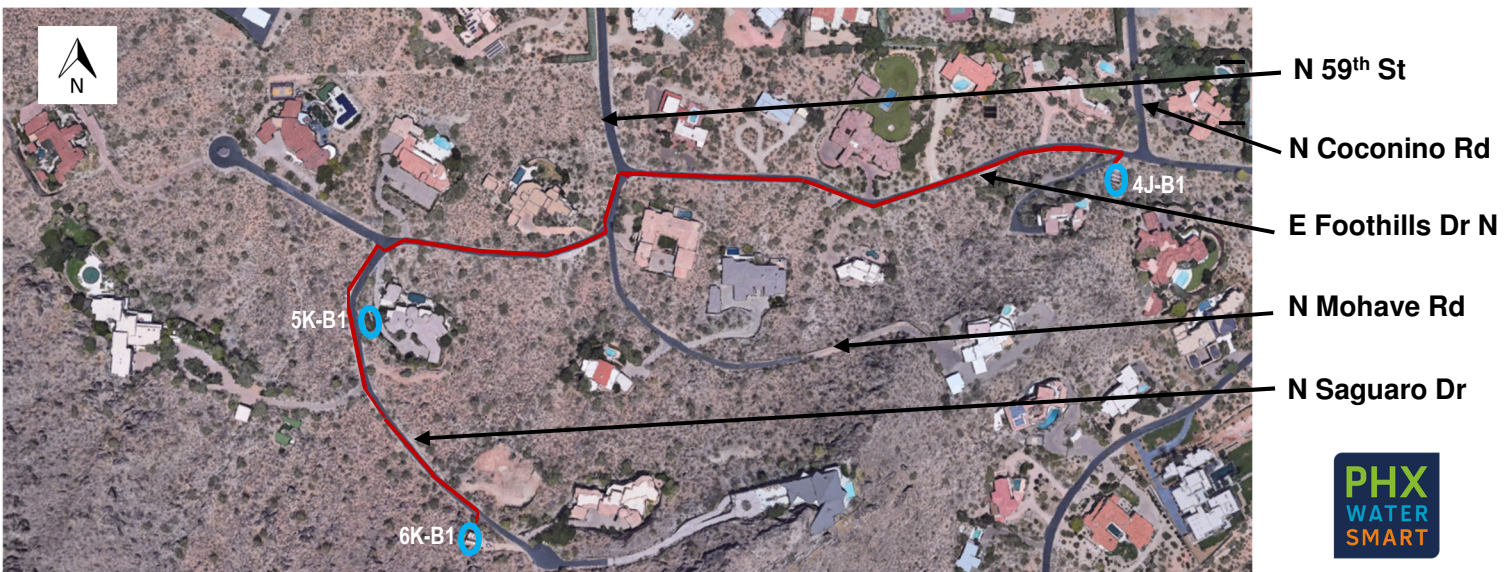
PROJECT INFORMATION

The City of Phoenix Water Services Department and Felix Construction will be replacing the temporary above-ground water service line in your neighborhood with the new permanent underground line, associated water service lateral connections, and fire hydrants. Improvements also include upgrades to three booster pump stations shown on the map below. These improvements will ensure a continued reliable water supply to the community.

PROJECT DETAILS

- Construction will begin mid-August 2019. And is anticipated to take approximately nine months to complete all improvements.
- The contractor will install the new water line beginning at the top of Saguaro Drive proceeding north and east downhill to Coconino Road. The temporary water line will remain in place until the new waterline construction is complete.
- No roadway grading changes will occur. Disturbed pavement will be restored to its existing condition, and the pavement will receive a seal coat pursuant to Town standards.
- The new waterline will be placed mostly within the existing waterline alignment, and the old pipe will be removed.
- Improvements to the booster pump stations will be intermittent throughout construction.
- A temporary mobile booster pump will be placed at Booster Pump Station 4J-B1 located near Coconino Road to help ensure quality water service during construction.
- Residents will be notified prior to any scheduled water service interruptions during permanent waterline connections to individual service meters.
- Work hours will generally be Monday through Friday from 6:00 am to 5:00 pm – summer hours, and 7:00 am to 5:00 pm – winter hours.
- During work hours, traffic will be restricted, but maintained adjacent to the contractor's work area as much as possible. We want residents and the crews to be safe. Please use caution when traveling through the construction area. Work will include open trenching during work hours. Safety of cyclists is paramount, alternate routes are highly suggested whenever possible.
- Our team will work closely and coordinate with residents throughout construction.

Area Map: — Permanent Water Line Alignment ○ Booster Pump Stations



We are committed to:

- Providing reliable, high quality and affordable service and supply.
 - Proactive planning, maintenance and replacement programs to minimize disruption and improve quality of life for Phoenix residents.
 - Wisely using our water resources to protect and enhance community health and our natural environment.
 - Providing sound, safe infrastructure with sufficient capacity to meet the future needs of the city of Phoenix.
 - Open communication and working together with the community during construction.
- We appreciate your support and realize that this project may be of some inconvenience in the short-term but will provide long-term water service benefits for you and your neighbors.*

PROJECT CONTACTS

Stephen Daras, Project Manager
Water Services Department

Jason Evahnenko
Project Manager
Felix Construction

Tom Foley
Project Manager
B&F Contracting

To acquire this publication in Braille, large print or audio tape contact the Project Hotline at (480) 281-1506 or (TTY:711).

QUESTIONS

If you have questions or concerns, please contact the project hotline at (480) 281-1506, or for water service emergencies contact the Water Services Emergency number at (602) 261-8000.

Project No. WS85100049-3

